

# SILVERSTEP® RETRACTABLE BANNER STAND 60"

RETRACTABLE BANNER STANDS

PRODUCT CODE: SS60



On frame On graphic



## PRODUCT DESCRIPTION

Durable and uniquely designed, this aluminum stand is the perfect combination of versatility, appeal, and affordability.

DISPLAY DIMENSION	61.5" W x 9.5" H x 3" D
GRAPHIC DIMENSIONS	60" W x 69" to 92" H

## GRAPHIC MATERIAL

Dye Sublimated Fabric

## GRAPHIC FINISHING

5" Bleed at the bottom

## DISPLAY CONSTRUCTION

Sturdy Aluminum Construction

## SHIPPING WEIGHTS & DIMENSIONS

SINGLE BOX - 1 Unit

Shipping Weight	26 lbs (frame and graphic)
Shipping Dimensions	67" H x 13" W x 5" D

MASTER BOX - 4 Units

Shipping Weight	111 lbs (stand only) 112 lbs (frame and graphic)
Shipping Dimensions	69" H x 27" W x 13" D

## LARGE QUANTITY FREIGHT

Master Box - Freight Shipping	6 boxes per 48" L x 40" W x 69" H skids
Master Box - Freight Weight	333 lbs (frame only) 336 lbs (frame & graphic)

## GRAPHIC TURN AROUND TIME

3-5 business days after proof approval

## AVAILABLE ACCESSORIES

Silver Clamp Light (35 Watts)	Silver Clamp Light LED
Silver Light (50 Watts)	Silverstep Magnetic Connector

## AVAILABILITY

GA



Silver Hook & Loop Bar  
(Optional for Fabric)

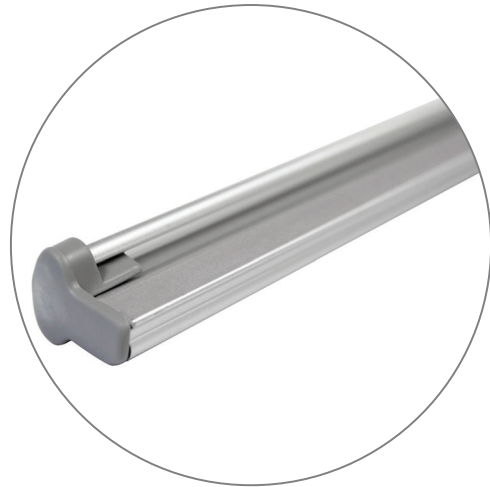


Silverstep Magnetic Connector  
(Optional)

PARTS LIST



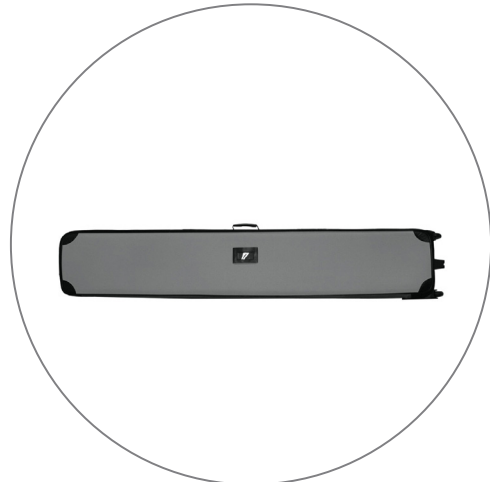
Qty 1 - Silverstep Stand



Qty 1 - Clamp Bar



Qty 2 - Telescopic Support Poles



Qty 1 - Silver Travel Bag

# SILVERSTEP® RETRACTABLE BANNER STAND 60"

RETRACTABLE BANNER STANDS

PRODUCT CODE: SS60

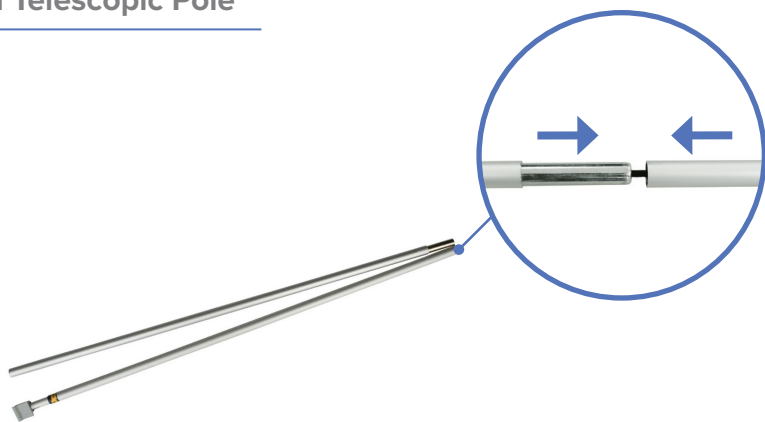
## SET UP INSTRUCTIONS

### Prepare Banner Stand

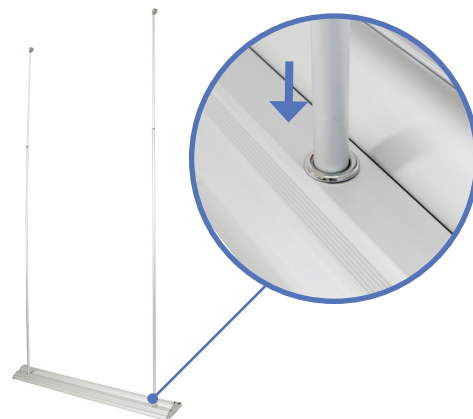


a. Remove Silverstep Stand out of bag.

### Install Telescopic Pole

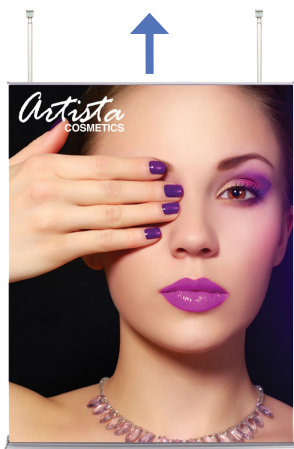


a. Assemble telescopic poles.



b. Insert telescopic poles into hole of the base stand.

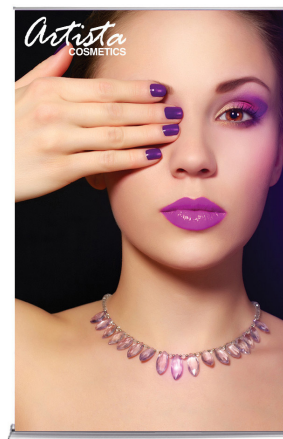
### Pull Up Banner



a. Pull banner out of base.



b. Attach telescopic poles to the clamp bar. Adjust pole to desired height.



c. Complete stand.

# SILVERSTEP® RETRACTABLE BANNER STAND 60"

RETRACTABLE BANNER STANDS

PRODUCT CODE: SS60

## SET UP INSTRUCTIONS

### Install Magnetic Connector



a. Pull off end caps from Silverstep.



b. Push connector piece until it locks in position.



c. Connect another Silverstep onto it.

### Complete Connection

