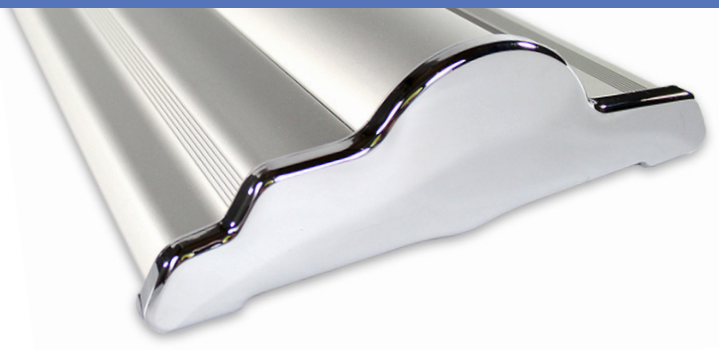


SILVERSTEP® RETRACTABLE BANNER STAND 36"

RETRACTABLE BANNER STANDS
PRODUCT CODE: SS36



On frame On graphic



PRODUCT DESCRIPTION

Durable and uniquely designed, this aluminum stand is the perfect combination of versatility, appeal, and affordability.

DISPLAY DIMENSION	37.5" W x 9.5" H x 3" D
GRAPHIC DIMENSIONS	36" W x 69" to 92" H

GRAPHIC MATERIAL

Dye Sublimated Fabric

GRAPHIC FINISHING

5" Bleed at the bottom

DISPLAY CONSTRUCTION

Sturdy Aluminum Construction

SHIPPING WEIGHTS & DIMENSIONS

SINGLE BOX - 1 Unit

Shipping Weight	18 lbs (frame and graphic)
Shipping Dimensions	41" H x 13" W x 5" D

MASTER BOX - 4 Units

Shipping Weight	64 lbs (stand only) 65 lbs (frame and graphic)
Shipping Dimensions	42" H x 26" W x 10" D

LARGE QUANTITY FREIGHT

Master Box - Freight Shipping	12 boxes per 48" L x 40" W x 52" H skids
Master Box - Freight Weight	384 lbs (frame only) 390 lbs (frame & graphic)

GRAPHIC TURN AROUND TIME

3-5 business days after proof approval

AVAILABLE ACCESSORIES

Silver Clamp Light (35 Watts)	Silver Clamp Light LED
Silver Light (50 Watts)	Black Light (50 Watts)
Silverstep Magnetic Connector	

AVAILABILITY	GA
--------------	----



Black Base
(Optional)



Black Clamp Bar
(Optional for Super Flat Vinyl)



Silverstep Magnetic Connector
(Optional)



Black Hook & Loop Bar
(Optional for Fabric)



Silver Hook & Loop Bar
(Optional for Fabric)

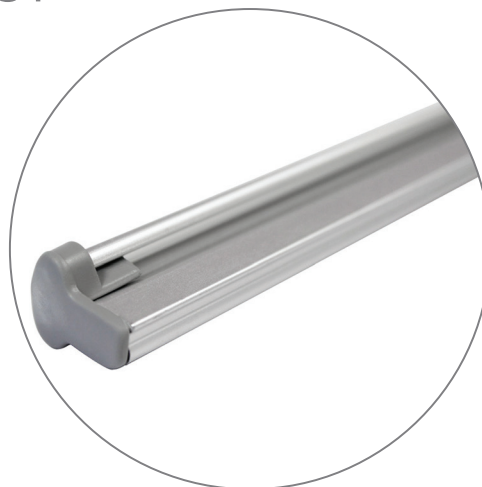


Silverstep Magnetic Connector
(Optional)

PARTS LIST



Qty 1 - Silverstep Stand



Qty 1 - Clamp Bar



Qty 1 - Telescopic Support Pole



Qty 1 - Silver Travel Bag

SILVERSTEP® RETRACTABLE BANNER STAND 36"

RETRACTABLE BANNER STANDS

PRODUCT CODE: SS36

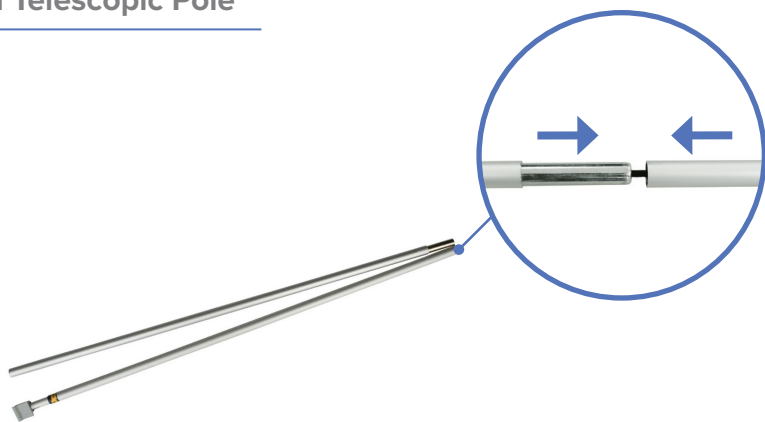
SET UP INSTRUCTIONS

Prepare Banner Stand

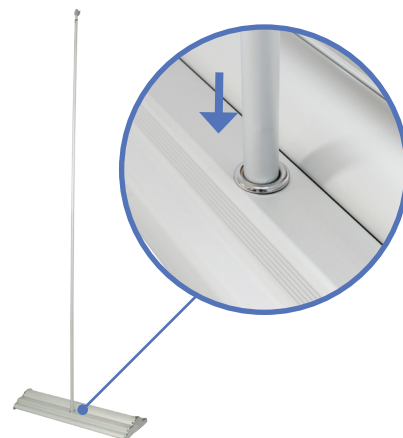


a. Remove Silverstep Stand out of bag.

Install Telescopic Pole

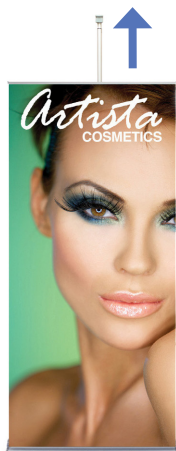


a. Assemble telescopic pole.



b. Insert telescopic pole into hole of the base stand.

Pull Up Banner



a. Pull banner out of base.



b. Attach telescopic pole to the clamp bar.
Adjust pole to desired height.



c. Complete stand.

SILVERSTEP® RETRACTABLE BANNER STAND 36"

RETRACTABLE BANNER STANDS

PRODUCT CODE: SS36

SET UP INSTRUCTIONS

Install Magnetic Connector



a. Pull off end caps from Silverstep.



b. Push connector piece until it locks in position.



c. Connect another Silverstep onto it.

Complete Connection

