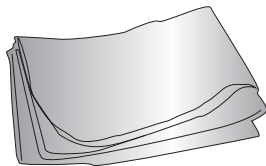


Convertible™ Table Throw

Product Parts

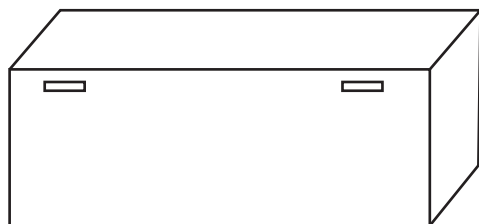
1 - Table Throw



Display Set-Up

Step 1

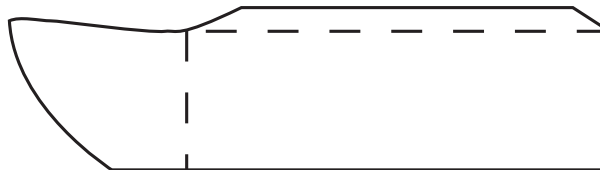
Unfold table throw. Place table throw over 6' table. Position table throw with top seam at rear of table.



Back Side View

Step 2

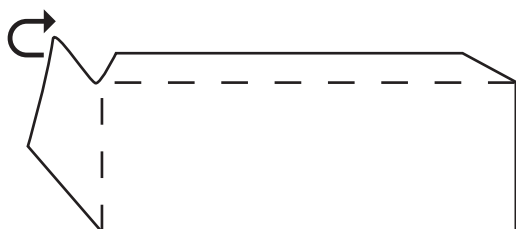
Grasp the Hook & Loop tab closest to front of table. Align fabric and begin rotating fabric toward the back of the table.



Front Side View

Step 3

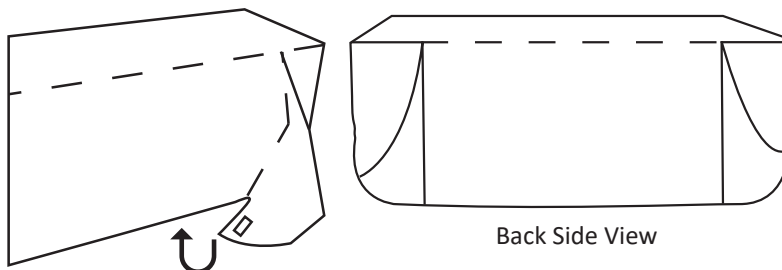
Wrap throw tightly around top edge of the table. Attach Hook tab to Loop tab on back of throw. Repeat process for other side of throw.



Front Side View

Step 4

Attach remaining Hook tab and attach to Loop tab found underneath the top back edge of table throw. Repeat process for other side of throw. The remaining fabric will be gathered neatly.



Back Side View

Storage & Care

Store in a cool, dry location preferably in a poly bag. Recommended for indoor use only. Machine wash on gentle cycle using mild detergent. Tumble dry on low heat setting only. Do not dry clean or iron.