



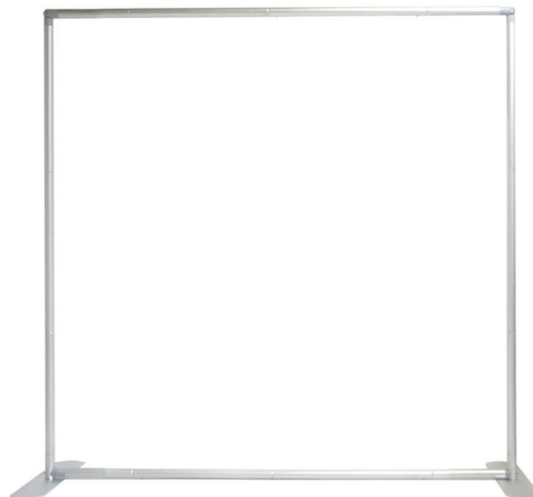
FABRIC DISPLAYS

ONE CHOICE - 8 FT. FABRIC DISPLAY
STRAIGHT

PRODUCT CODE: OC-EZT8STRG1 & OC-EZT8STRG2



Front View



Frame Only

PRODUCT DESCRIPTION

Our tension fabric systems are a great alternative to standard backwall displays. Quickly assembled in just 5 minutes with no tools required, slide the tubes together to make the frame and lock in place with a push button snap. Then, simply pull the pillowcase-like graphic over the frame and zip it shut. The zipper, hidden from view, tightens the stretch fabric beautifully displaying your images. Disassembled, the lightweight frame and graphic fits inside a compact silver bag.

FEATURES

DISPLAY DIMENSIONS

- 95.75" W x 91.5" H x 19.75" D

GRAPHIC DIMENSIONS

- 91" W x 91" H

GRAPHIC MATERIAL

- Stretch Fabric

GRAPHIC FINISHING

- Pillowcase graphic finishing with zipper at the bottom.

DISPLAY CONSTRUCTION

- 43mm dia. aluminum tubing

WEIGHTS & DIMENSIONS (WITH STAND & GRAPHICS)

SHIPPING WEIGHT

- (Qty 1): 28 lbs

PACKAGE DIMENSIONS

- 53" L x 13" W x 8" H

TURNAROUND TIME

GRAPHIC PACKAGE

- 2 business days after proof approval*

AVAILABILITY

- WEST COAST
FULFILLMENT CENTER

*After proof approval, for **up to 10 sets**. Reply with approval via e-mail by 4:00pm PT the day prior to the assigned ship date.

indy displays



833.257.6278 | indydisplays.com



FABRIC DISPLAYS

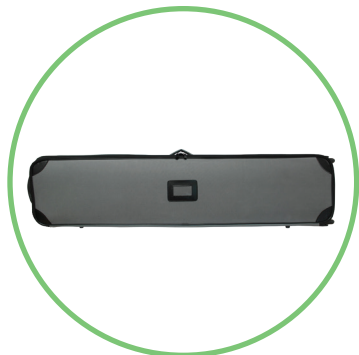
ONE CHOICE - 8 FT. FABRIC DISPLAY

STRAIGHT

PRODUCT CODE: OC-EZT8STRG1 & OC-EZT8STRG2



PARTS LIST



QTY 1:
Silverbag

- Outside Dimensions:**
- 48 1/2" W x 12 1/2" H x 6 1/2" D
- Inside Dimensions:**
- 48" W x 12" H x 6" D



QTY 1:
Bottom Horizontal Tube Set



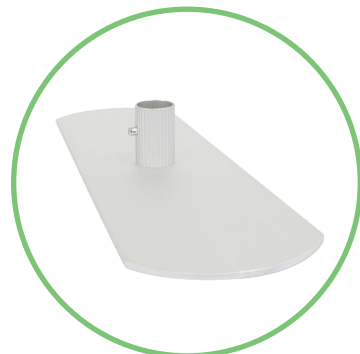
QTY 1:
Top Horizontal Tube Set



QTY 2:
Vertical Tube Sets



QTY 2:
Bottom Corner Connectors



QTY 2:
Feet

• 19 3/4" L x 6 1/4" W x 2 1/2" H



833.257.6278 | indydisplays.com



FABRIC DISPLAYS

ONE CHOICE - 8 FT. FABRIC DISPLAY
STRAIGHT

PRODUCT CODE: OC-EZT8STRG1 & OC-EZT8STRG2



CARE SHEET - DYE-SUB FABRIC

HANDLING TIPS

1. If your exhibit fabric has a zipper, please keep zipper closed for storage.
2. Wrinkles can be removed with cool iron or fabric steamer.
3. Fabric should NOT be stored when damp or wet. Store in cool, dry area.
4. For storing graphics please remove from plastic packaging that was provided and keep fabric in cool/dry place.

WASHING

1. Your fabric graphic can be machine washed. Remove any hardware attached to the fabric prior to cleaning. Use MILD soap and cool water. Air dry fabric, dry on frame if frame is available.
2. Fabric must be COMPLETELY dry prior to storing.
3. DO NOT DRY CLEAN

STAIN TREATMENT

1. Treat stain from backside of fabric.
2. Remove as much debris as possible with a soft bristle brush (do NOT rub too hard).
3. Use a clean, lint-free white cloth. Lightly pat the stain from the outside moving in (to keep stain from spreading).
4. If a cleaning solution is used, rinse the area well with water to ensure NO solution is left on fabric.
5. Most stains can be treated with household fabric stain removers. It is ALWAYS important to test how the solution will react to the fabric. This can be tested by dabbing solution to a small corner of the fabric. Most household cleaners will provide treatment instructions depending on the type of stain.



- Wrinkles can be removed from fabric with a cool iron or steamer.



- Fabric can be machine washed - use cold water, delicate cycle.



- Do NOT bleach fabric



- Do NOT tumble dry. Fabric must be air dried on the frame to prevent shrinking.

 indy displays

833.257.6278 | indydisplays.com